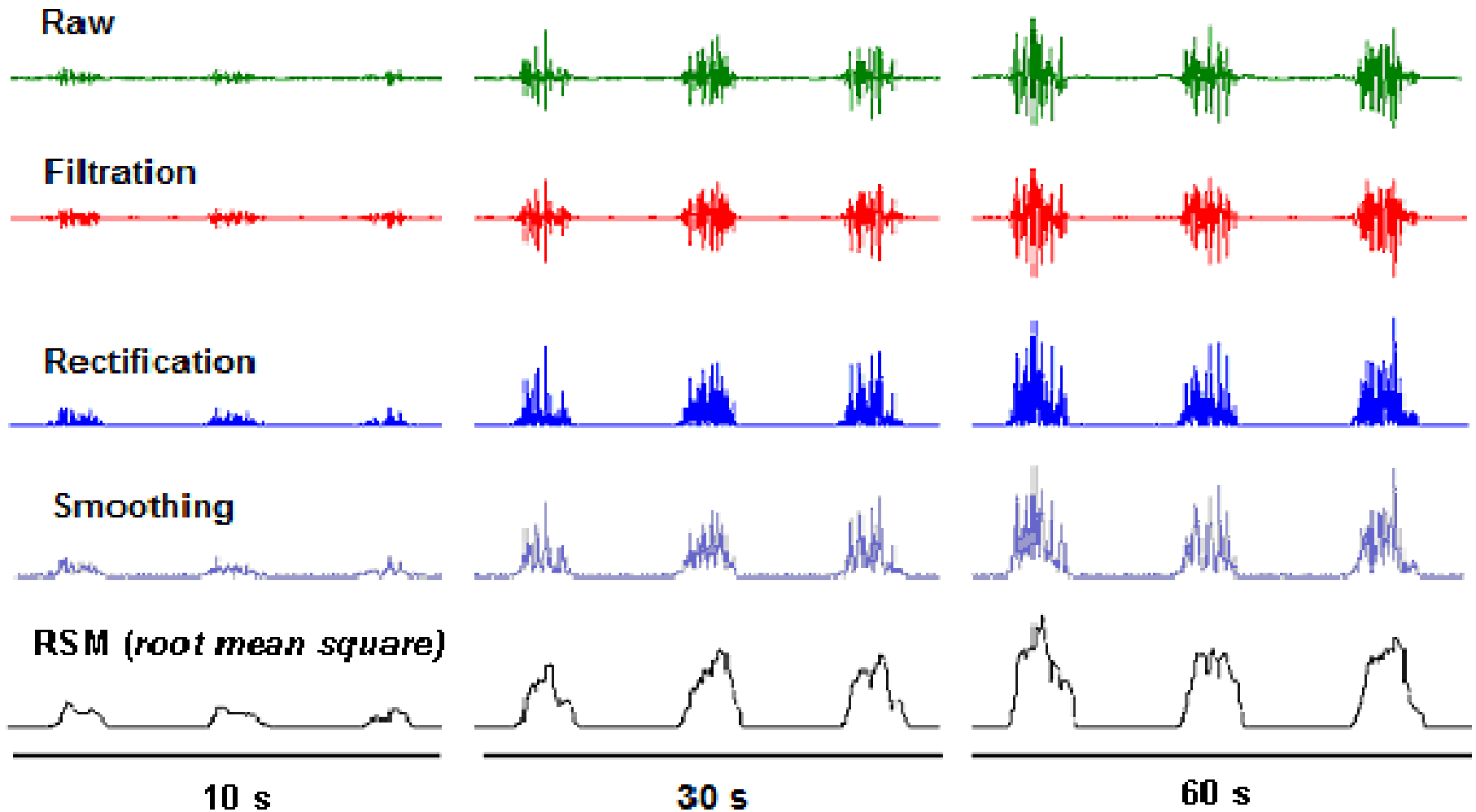


Example - Filter



Example - Filter

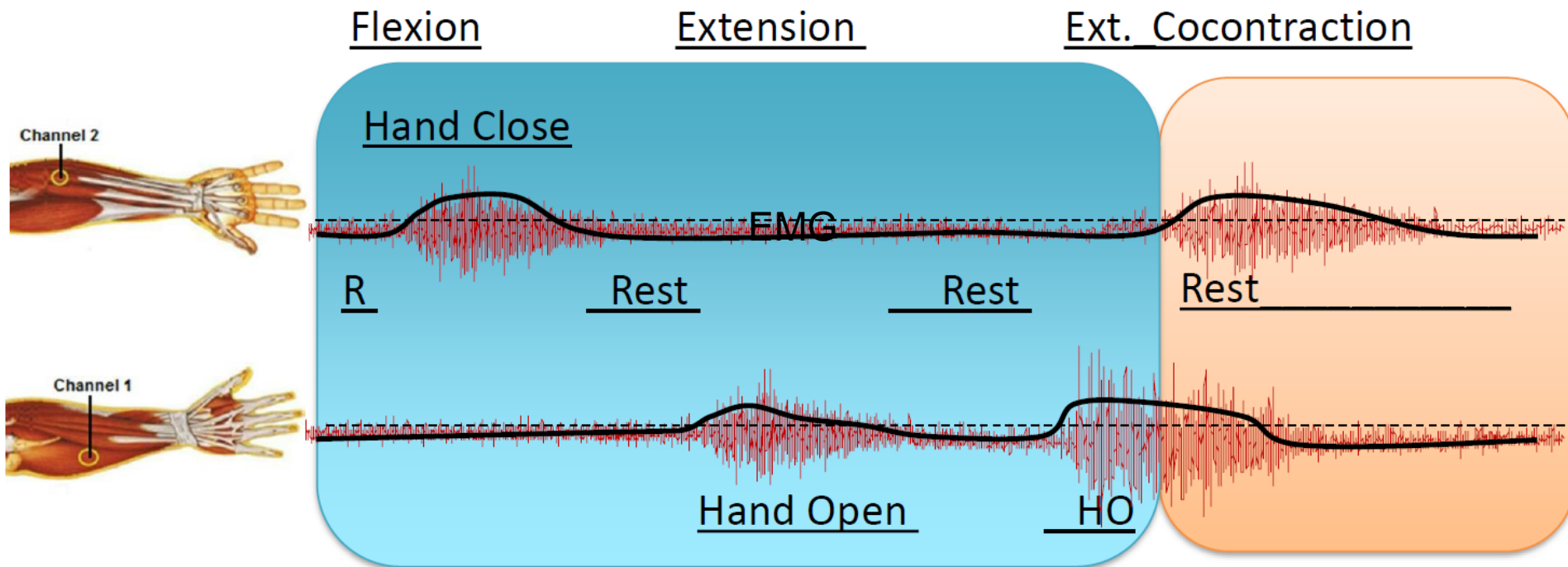
Envelope-based possibilities:

$$MAV = \frac{1}{N} \sum_{k=1}^N |X_k|$$

$$RMS = \sqrt{\frac{1}{N} \sum_{k=1}^N X_k^2}$$

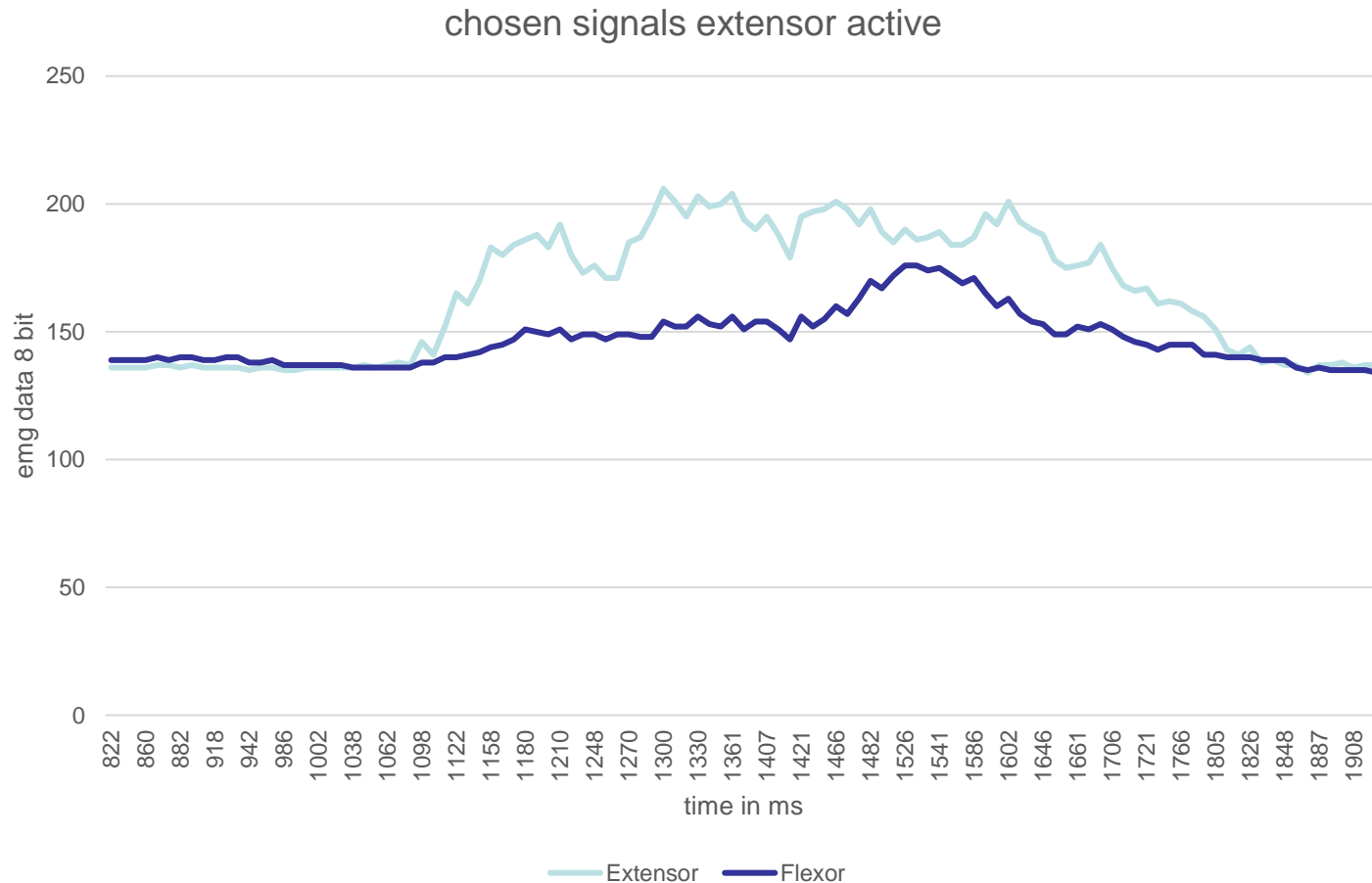
Example - Filter

Envelope-based possibilities:



Not EMG signal itself is used but the envelope.

Example - Algorithmus



Algorithms: linear – non lineare – threshold based

Example - Algorithm

